

**PRODUCT OVERVIEW**

REX PANELS & PROFILES

**"STRONG AS A  
BEAR"**





# PANELS & PROFILES

## ABOUT US

**Rex Panels & Profiles was founded by Michel Verhelst in 2012.**

**Initially, Rex Panels & Profiles began producing profiled sheets at its first two-hectare site in Tournai, Belgium.**

**A major investment project was soon set up in 2013 for the production of composite panels, Rex's product for the future. This was made possible with support from the European Union and the Walloon Region.**

**That led to the start of the company's first composite panel production line at a second, four-hectare site in Tournai, Belgium in 2015.**

The first composite panel production line was designed to produce roofing panels, eco panels, wall panels and hidden fix wall panels. Later on, refrigerator panels and roof tile panels were added.

That made it the most versatile production line in the world.

The panels are sold in Belgium and the surrounding countries, but also in distant export countries under the capable leadership of Dieter Lottin.

Thanks to its success, the first production line is now working at full capacity and investments in a second composite panel production line have begun.

It will be ready for use in the first half of 2020. There will also be a third production line which will be operational in Q4 2020.

Because of the new production lines, Rex will be able to offer an even bigger range to its customers. At the same Rex will have the capacity to supply all of its customers within very short delivery times.

Rex Panels & Profiles intends to continue investing and growing in the market for insulated panels, profiled sheets and related construction products over the next 25 years. This will lead to the creation of new production lines and sites in Belgium, in Europe and around the world.

Rex aims to position itself as an alternative to the monopolisation that is becoming more and more apparent in this sector, thus offering the customer a better choice and range of products.

As a first-generation enterprise, Rex believes in short supply chains to the customer, rapid service and high quality. What is more, its extremely wide range means that Rex can meet all the customer's needs.

We look forward to growing alongside our customers in the next 25 years, turning our company into an international player.

**Michel Verhelst**  
Owner, Founder and CEO

## INDEX

● SANDWICH ROOF PANELS PIR	P. 4	● REXTILE SHEETS	P. 56
REX SDW ROOF 4	P. 6	REX TILE 1100	P. 58
REX SDW ROOF 4 ECO	P. 10		
REX SDW ROOF 3	P. 14	● PROFILED SHEETS	P. 62
REX SDW FLAT ROOF	P. 18	REX 33.250.1000	P. 64
		REX 45.333.1000	P. 68
● SANDWICH ROOF PANELS MW	P. 20	REX 35.207.1035	P. 72
REX SDW ROOF 4 MW	P. 22		
		● DAYLIGHT SOLUTIONS	P. 74
● SANDWICH WALL PANELS PIR	P. 26	REX VISION 4	P. 76
REX SDW WALL VF 1000	P. 28	REX VISION LIGHT 3	P. 77
RES SDW WALL TF 1150	P. 32	REX VISION LIGHT 4	P. 78
REX SDW WALL HF 1000	P. 36		
		● FLASHINGS	P. 80
● SANDWICH WALL PANELS MW	P. 40	● COLOR CHART	P. 82
REX SDW WALL VF 1000 MW	P. 42		
REX SDW WALL HF 1000 MW	P. 46		
● AGRI PANELS	P. 50		
REX SDW ROOF 4 CLEAN	P. 52		
REX SDW ROOF 4 AGRI ECO	P. 54		
REX SDW ROOF 4 AGRI CLEAN	P. 55		

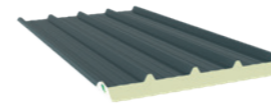


# SANDWICH ROOF PANELS PIR

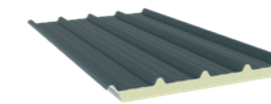
The sandwich roof panels from REX Panels & Profiles are designed to cover pitched roofs in agricultural and industrial applications. Available in different thicknesses and materials, to create a suitable solution for every situation. The PIR (polyisocyanurate) insulation core guarantees a lightweight solution with excellent insulating and reaction to fire properties.



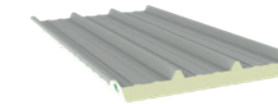
## PRODUCT RANGE



REX SDW ROOF 4  
P. 6



REX SDW ROOF 4 ECO  
P. 10

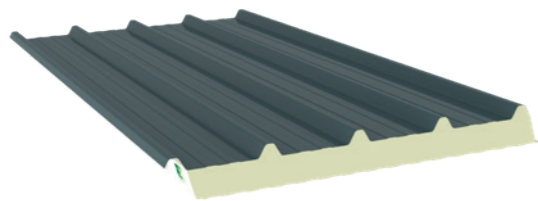


REX SDW ROOF 3  
P. 14



REX SDW FLAT ROOF  
P. 18

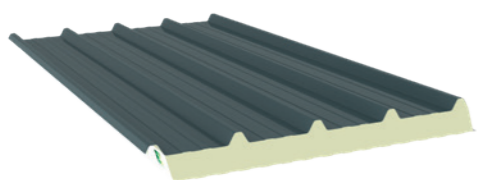
## REX SDW **ROOF 4**



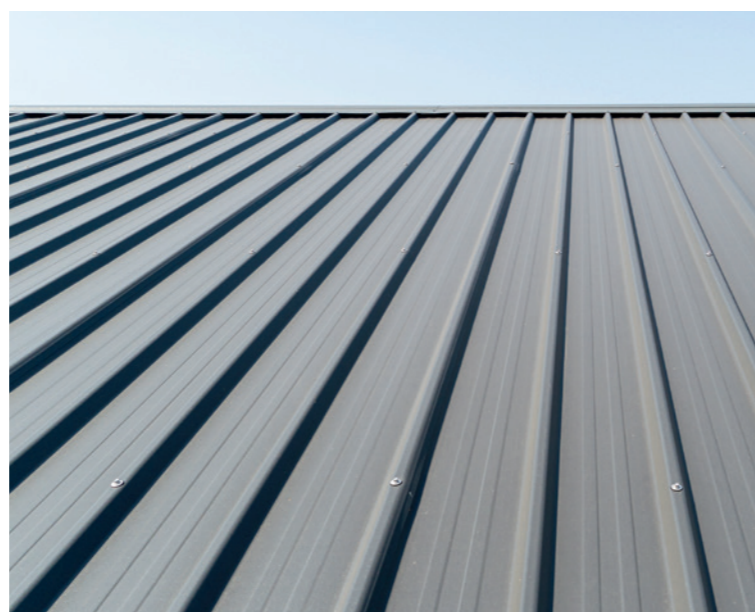
- Trapezoidal external sheet "ROOF 4"
- For pitched roofs starting from 4°
- Fire class B-S2-D0 (standard)
- **Up to 30 minutes fire insulation and integrity (EI30)**
- Cover width 1000 mm
- Thicknesses from 20 mm to 160 mm
- Insulation value down to  $U = 0,14 \text{ W/m}^2 \cdot \text{k}$
- Also suitable for PV system installation



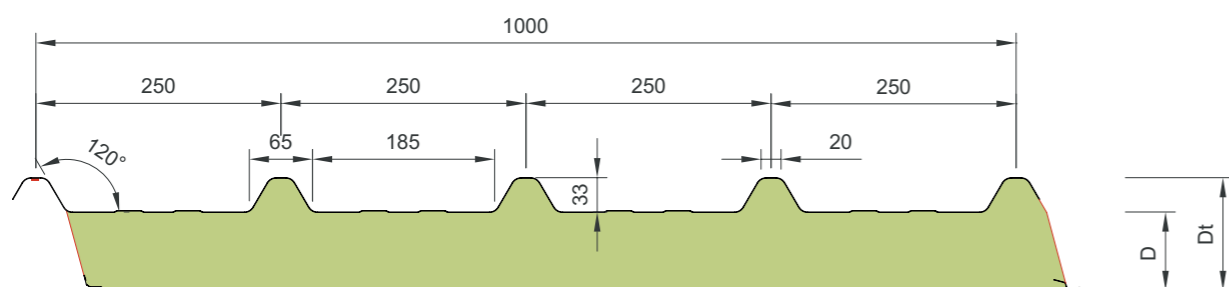
## APPLICATIONS



The REX SDW ROOF 4 sandwich panel has a steel trapezoidal profiled external sheet and a light linear profiled steel internal sheet. The rigid foam core is standard made of PIR (Polyisocyanurate) and this product can be used for building with roof pitches of 4° or more after deflection.



## Section



## Properties

Thickness [D]	Overall Thickness [Dt]	Weight	U-value
[mm]	[mm]	[kg/m <sup>2</sup> ]	[W/m <sup>2</sup> .k]
20	53	10,7	0,82
30	63	11,1	0,61
40	73	11,5	0,48
50	83	11,9	0,40
60	93	12,3	0,34
70	103	12,7	0,30
80	113	13,1	0,26
90	123	13,5	0,24
100	133	13,9	0,22
110	143	14,3	0,20
120	153	14,7	0,18
130	163	15,1	0,17
160	193	16,3	0,14

The mentioned insulation values in this table are based on calculations according NEN-EN14509:2013

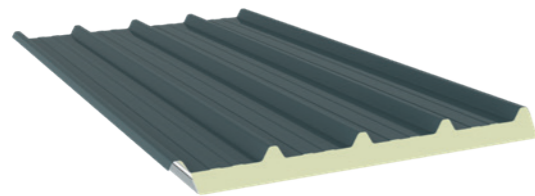
## Fire

Property	Standard	Certification Standard	Result	Field of application
Reaction to Fire	EN ISO 11925-2:2010 ignitability	EN 13501-1:2007 Fire classification of construction products and building elements - Part 1	B-S2-D0	All thicknesses
	EN 13501-1:2017 reaction to fire			
Fire resistance	EN1365-2: determining the fire resistance of roof constructions	EN 13501-2:2007 Fire classification of construction products and building elements - Part 2	REI30, RE120	≥ 100 mm thickness
External Fire Performance	CEN/TS 1187	EN14509:2013 & 2006/600/EC	B <sub>ROOF</sub> (t <sub>1</sub> , t <sub>2</sub> and t <sub>3</sub> )	All Thicknesses

## Certification



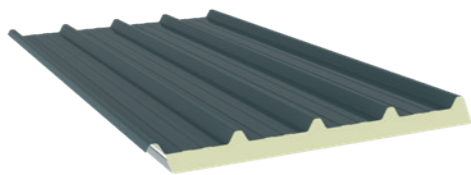
## REX SDW **ROOF 4 ECO**



- Trapezoidal External sheet "ROOF 4"
- For pitched roofs starting from 4°
- Fire class B-S2-D0 (standard)
- **Inside finished with aluminium foil**
- Cover width 1000 mm
- Suitable for agricultural applications
- Thicknesses from 20 mm to 160 mm
- Also suitable for PV system installation



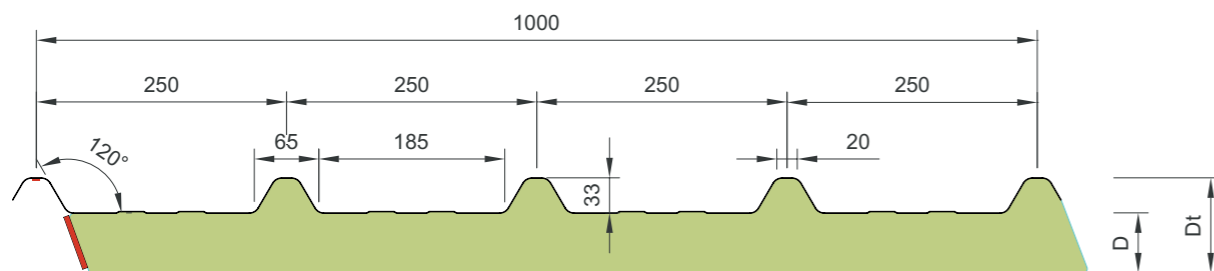
## APPLICATIONS



The REX SDW ROOF 4 ECO sandwich panel has a trapezoidal steel outer plate and an aluminum-foil finish at the inside. This product is therefore very suitable for buildings with an aggressive indoor climate (for example, a high concentration of ammonia vapors).

This product is supplied as standard with a PIR (Polyisocyanurate) rigid foam core material and is suitable for roofs with a roof pitch from 4° or more. **NOTE:** The aluminum stucco interior is an exclusively functional finish. We recommend the REX SDW ROOF 4 version when an aesthetically more attractive solution is required.

## Section



## Properties

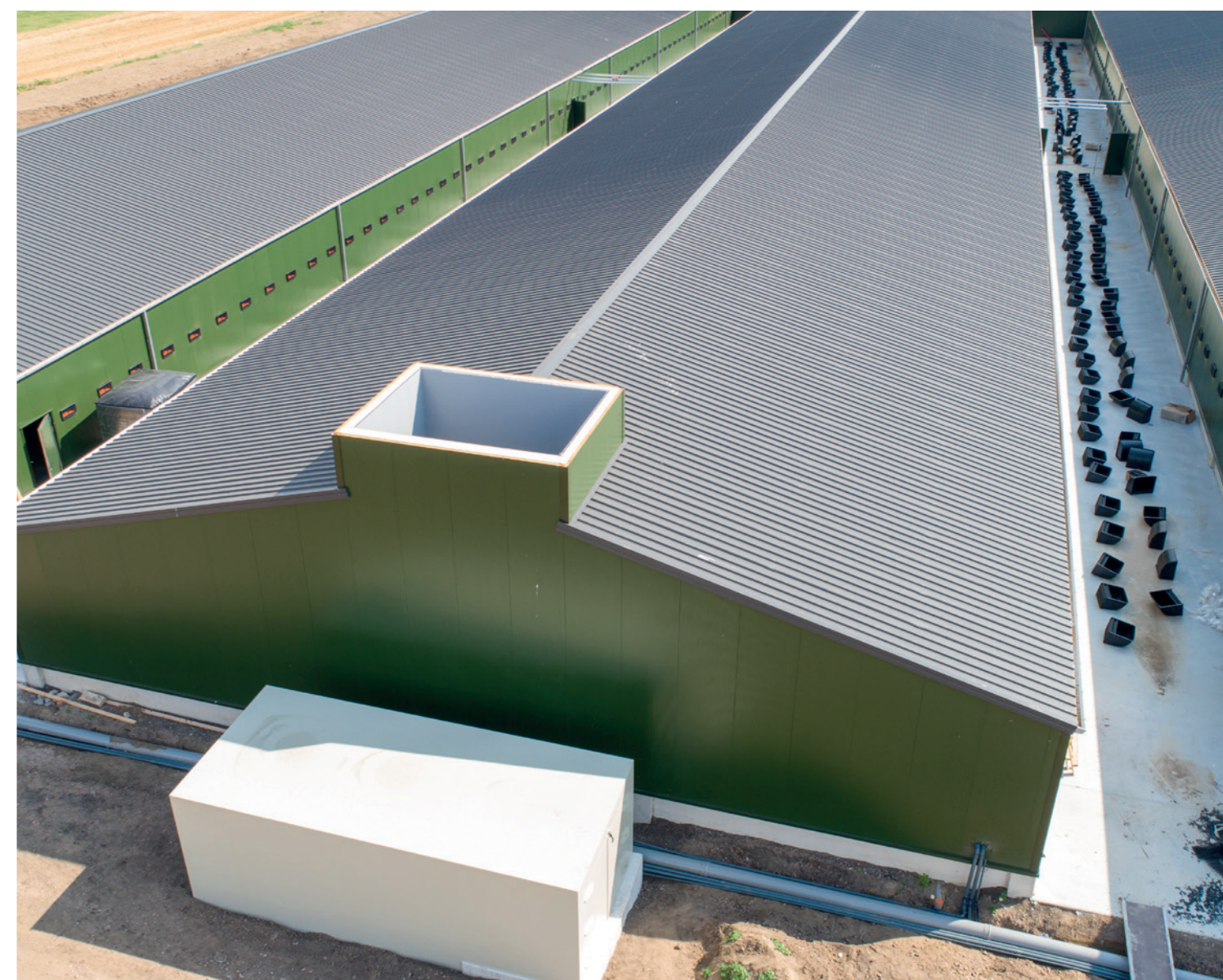
Thickness [D]	Overall Thickness [Dt]	Weight	U-value
[mm]	[mm]	[kg/m <sup>2</sup> ]	[W/m <sup>2</sup> .k]
20	53	6,6	0,82
30	63	7,0	0,61
40	73	7,4	0,48
50	83	7,8	0,40
60	93	8,2	0,34
70	103	8,6	0,30
80	113	9,0	0,26
90	123	9,4	0,24
100	133	9,8	0,22
110	143	10,2	0,20
120	153	10,6	0,18
130	163	11,0	0,17
160	193	12,2	0,14

The mentioned insulation values in this table are based on calculations according NEN-EN14509:2013

## Fire

Property	Standard	Certification Standard	Result	Field of application
Reaction to Fire	EN ISO 11925-2:2010 ignitability	EN 13501-1:2007 Fire classification of construction products and building elements - Part 1	B-S2-D0	All thicknesses
	EN 13501-1:2017 reaction to fire			
External Fire Performance	CEN/TS 1187	EN14509:2013 & 2006/600/EC	B <sub>ROOF</sub> (t <sub>1</sub> , t <sub>2</sub> and t <sub>3</sub> )	All thicknesses

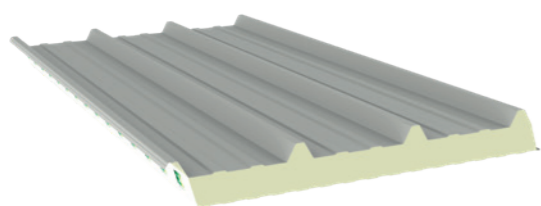
## Certification



# SANDWICH ROOF PANELS PIR

DELIVERY TIME ON REQUEST

## REX SDW **ROOF 3**

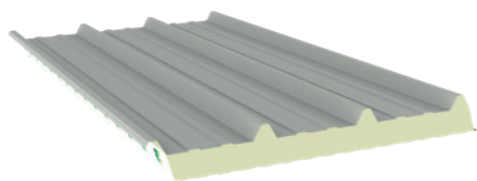


- Trapezoidal external sheet "ROOF 3"
- For pitched roofs starting from 4°
- Cover width 1000 mm
- Fire class B-S2-D0 (standard)
- Thicknesses starting from 40 mm to 150 mm
- Insulation value down to  $U = 0,15 \text{ W/m}^2 \cdot \text{k}$
- Also suitable for PV system installation





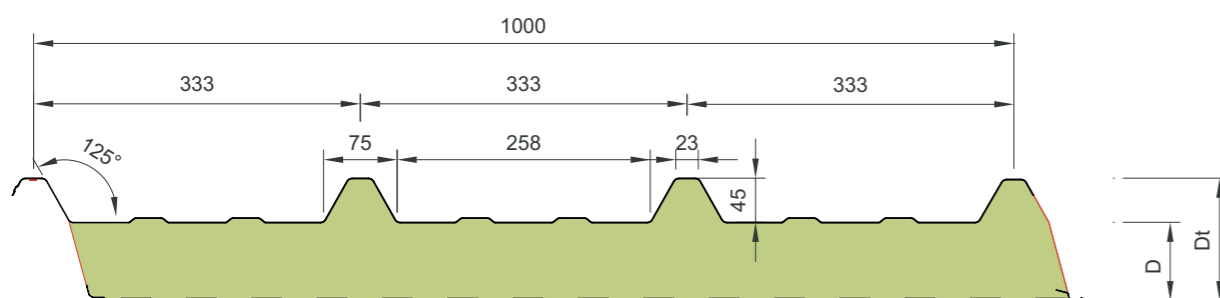
## APPLICATIONS



The REX SDW ROOF 3 sandwich panel has a steel trapezoidal profiled external sheet and a light linear profiled steel internal sheet. The rigid foam core is standard made of PIR (Polyisocyanurate) and this product can be used for building with roof pitches of 4° or more after deflection.



## Section



## Properties

Thickness [D] [mm]	Overall Thickness [Dt] [mm]	Weight [kg/m <sup>2</sup> ]	U-value [W/m <sup>2</sup> .k]
20	65	10,7	0,91
30	75	11,1	0,66
40	85	11,5	0,51
50	95	11,9	0,42
60	105	12,3	0,36
70	115	12,7	0,31
80	125	13,1	0,27
90	135	13,5	0,24
100	145	13,9	0,22
110	155	14,3	0,20
120	165	14,7	0,18
150	195	15,9	0,15

The mentioned insulation values in this table are based on calculations according NEN-EN14509:2013

## Fire

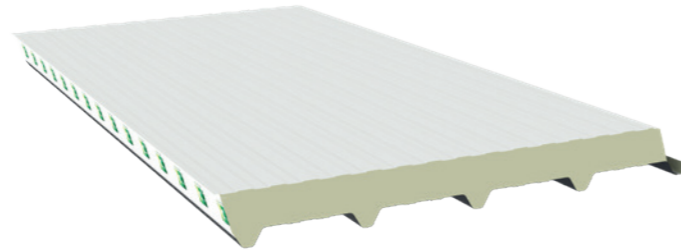
Property	Standard	Certification Standard	Result	Field of application
Reaction to Fire	EN ISO 11925-2:2010 ignitability	EN 13501-1:2007 Fire classification of construction products and building elements - Part 1	B-S2-D0	All thicknesses
	EN 13501-1:2017 reaction to fire			
External Fire Performance	CEN/TS 1187	EN14509:2013 & 2006/600/EC	B <sub>ROOF</sub> (t <sub>1</sub> , t <sub>2</sub> and t <sub>3</sub> )	All thicknesses

## Certification

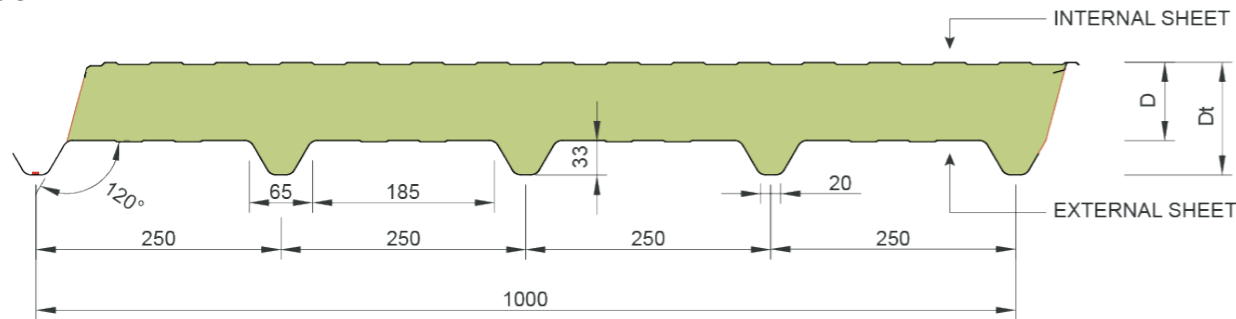


**APPLICATIONS**

The REX SDW FLAT ROOF sandwich panel has a trapezoidal steel inner plate and a lined steel outer plate. This product comes standard with a PIR (Polyisocyanurate) rigid foam core material and is suitable for flat roofs. After mounting, the roof surface must be waterproofed with a suitable roof covering.



**Section**



**Properties**

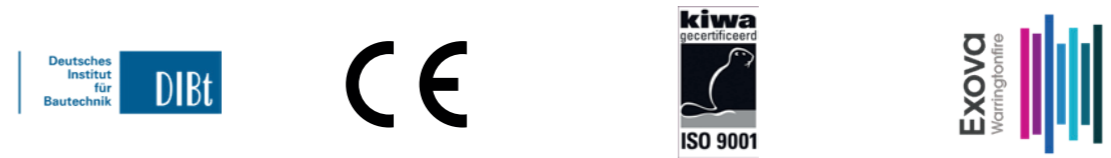
Thickness [D]	Overall Thickness [Dt]	Weight	U-value
[mm]	[mm]	[kg/m <sup>2</sup> ]	[W/m <sup>2</sup> .k]
60	93	12,3	0,34
80	113	13,1	0,26
100	133	13,9	0,22
120	153	10,6	0,18
130	163	15,1	0,17
160	193	16,3	0,14

The mentioned insulation values in this table are based on calculations according NEN-EN14509:2013

**Fire**

Property	Standard	Certification Standard	Result	Field of application
<b>Reaction to Fire</b>	EN ISO 11925-2:2010 ignitability	EN 13501-1:2007 Fire classification of construction products and building elements - Part 1	B-S2-D0	All thicknesses
	EN 13501-1:2017 reaction to fire			
<b>External Fire Performance</b>	CEN/TS 1187	EN14509:2013 & 2006/600/EC	B <sub>ROOF</sub> (t <sub>1</sub> , t <sub>2</sub> and t <sub>3</sub> )	All thicknesses

**Certification**

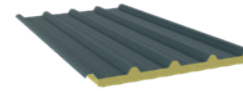


# SANDWICH ROOF PANELS MW

Roof panels with a mineral wool (MW) core are the perfect solution for situations where fire safety of the roof covering is top priority. Available in different thicknesses to meet the insulation and fire requirements for every situation.



## PRODUCT RANGE

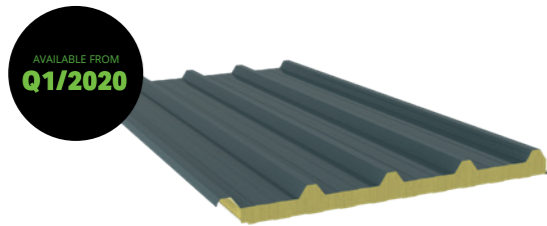


REX SDW ROOF 4 MW

P. 22

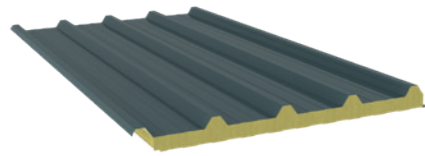
## SANDWICH ROOF PANELS MW

### REX SDW **ROOF 4 MW**



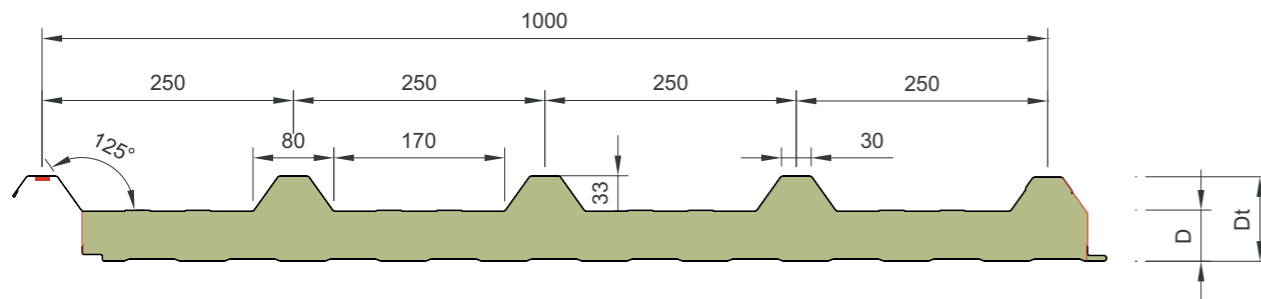
- Trapezoidal External sheet "ROOF 4"
- Mineral Wool core material
- For pitched roofs starting from 4°
- Standard fire class A2-S1-D0
- **Up to 120 minutes fire insulation and integrity (EI120)**
- Cover width 1000 mm
- Thicknesses from 50 mm to 200 mm
- Insulation value down to  $U = 0,21 \text{ W/m}^2 \cdot \text{k}$

**APPLICATIONS**



The REX SDW ROOF 4 MW sandwich panel has a steel trapezoidal profiled external sheet and a light linear profiled steel internal sheet. The fire resistant core is made of MW (Mineral Wool) and this product can be used for building with roof pitches of 4° or more after deflection.

**Section**



**Properties**

Thickness [D]	Overall Thickness [Dt]	Weight	U-value
[mm]	[mm]	[kg/m <sup>2</sup> ]	[W/m <sup>2</sup> .k]
50	83	17,1	0,77
60	93	18,1	0,66
80	113	20,1	0,50
100	133	22,1	0,41
120	153	24,1	0,35
150	183	27,1	0,28
180	213	30,1	0,24
200	233	32,1	0,21

The mentioned insulation values in this table are based on calculations according NEN-EN14509:2013

**Fire**

Property	Standard	Certification Standard	Result	Field of application
<b>Reaction to Fire</b>	EN ISO 11925-2:2010 ignitability	EN 13501-1:2007 Fire classification of construction products and building elements - Part 1	A2-S1-D0	All thicknesses
	EN 13501-1:2017 reaction to fire			
<b>Fire resistance</b>	EN1365-2: determining the fire resistance of roof constructions	EN 13501-2:2007 Fire classification of construction products and building elements - Part 2	EI30	≥ 60 mm thickness
			EI60	≥ 80 mm thickness
			EI90	≥ 100 mm thickness
			EI120	≥ 120 mm thickness

**Certification**

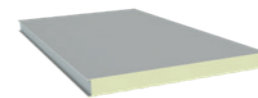


# SANDWICH WALL PANELS PIR

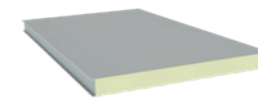
The PIR wall panels from REX Panels & Profiles are available in a through-fixed (visible) as well as a secret-fixed (invisible) alternative. Both products can be used horizontally and vertically. The PIR (polyisocyanurate) insulation core guarantees a lightweight solution with excellent insulating and reaction to fire properties.



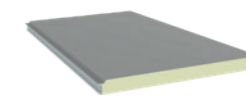
## PRODUCT RANGE



REX SDW WALL VF 1000  
P. 28



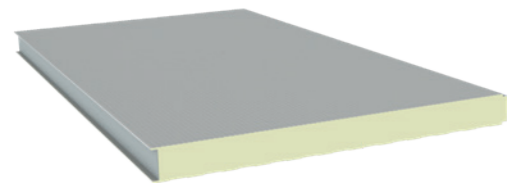
REX SDW WALL VF 1150  
P. 32



REX SDW WALL HF 1000  
P. 36

## SANDWICH WALL PANELS PIR

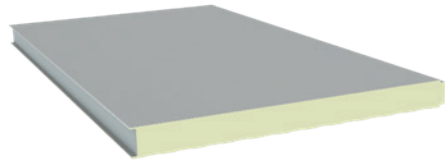
### REX SDW **WALL VF 1000**



- Available in various optical profiles
- Secret fixed installation
- Horizontal or vertical installation
- **Cover width 1000 mm**
- **Up to 30 minutes fire insulation and integrity (EI30)**
- Fire class B-S2-D0 (standard)
- Thicknesses from 40 mm to 220 mm
- Insulation value down to  $U = 0,10 \text{ W/m}^2 \cdot \text{k}$



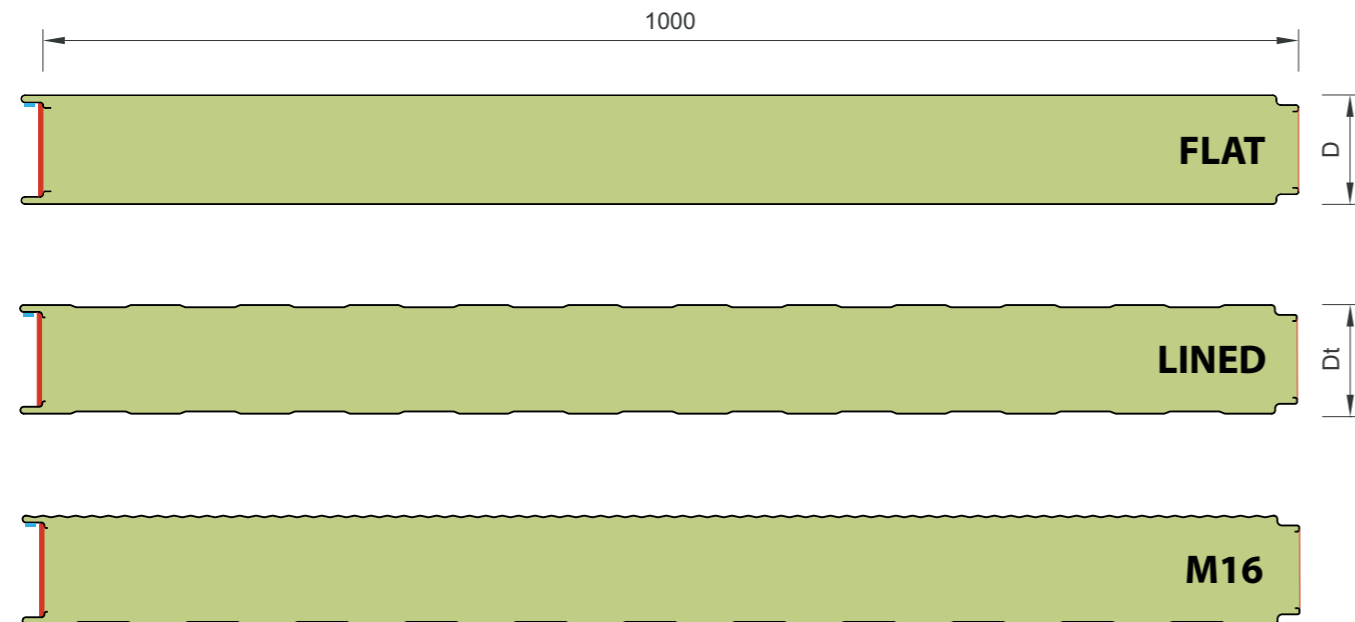
**APPLICATIONS**



The REX SDW WALL VF 1000 sandwich panel has steel inner and outer plates and is available in three different profiles (FLAT, LINED and M16 microrib). This product comes standard with a PIR (Polyisocyanurate) rigid foam core material and is suitable for both horizontal and vertical mounting and is visibly fixed.



**Section**



**Properties**

Thickness [D]	Overall Thickness [Dt]	Weight	U-value
[mm]	[mm]	[kg/m <sup>2</sup> ]	[W/m <sup>2</sup> .k]
40	44	10,8	0,55
60	64	11,6	0,37
80	84	12,4	0,28
100	104	13,2	0,22
120	124	14,0	0,19
150	154	15,2	0,15
170	174	16,0	0,13
200	204	17,2	0,11
220	224	18,0	0,10

The mentioned insulation values in this table are based on calculations according NEN-EN14509:2013

**Fire**

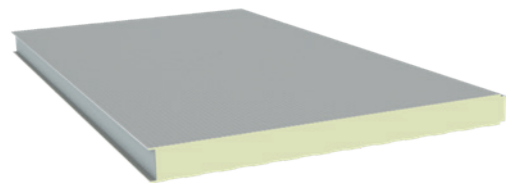
Property	Standard	Certification Standard	Result	Field of application
<b>Reaction to Fire</b>	EN ISO 11925-2:2010 ignitability	EN 13501-1:2007 Fire classification of construction products and building elements - Part 1	B-S2-D0	All thicknesses
	EN 13501-1:2017 reaction to fire			
<b>Fire resistance</b>	EN1365-2: determining the fire resistance of roof constructions	EN 13501-2:2007 Fire classification of construction products and building elements - Part 2	EI30, EW60	≥100 mm thickness
	EN1365-2: determining the fire resistance of roof constructions	EN 13501-2:2007 Fire classification of construction products and building elements - Part 2	EI60, EW60	≥ 200 mm thickness

**Certification**



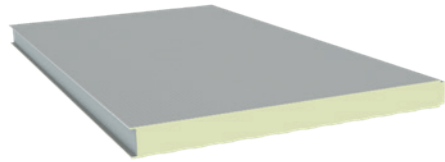


### REX SDW **WALL VF 1150**



- Available in various optical profiles
- Through fixed installation
- Horizontal or vertical installation
- **Cover width 1150 mm**
- **Up to 60 minutes fire insulation and integrity (EI60)**
- Standard fire class B-S2-D0
- Thicknesses starting from 40 mm to 220 mm
- Insulation value down to  $U = 0,10 \text{ W/m}^2\cdot\text{k}$

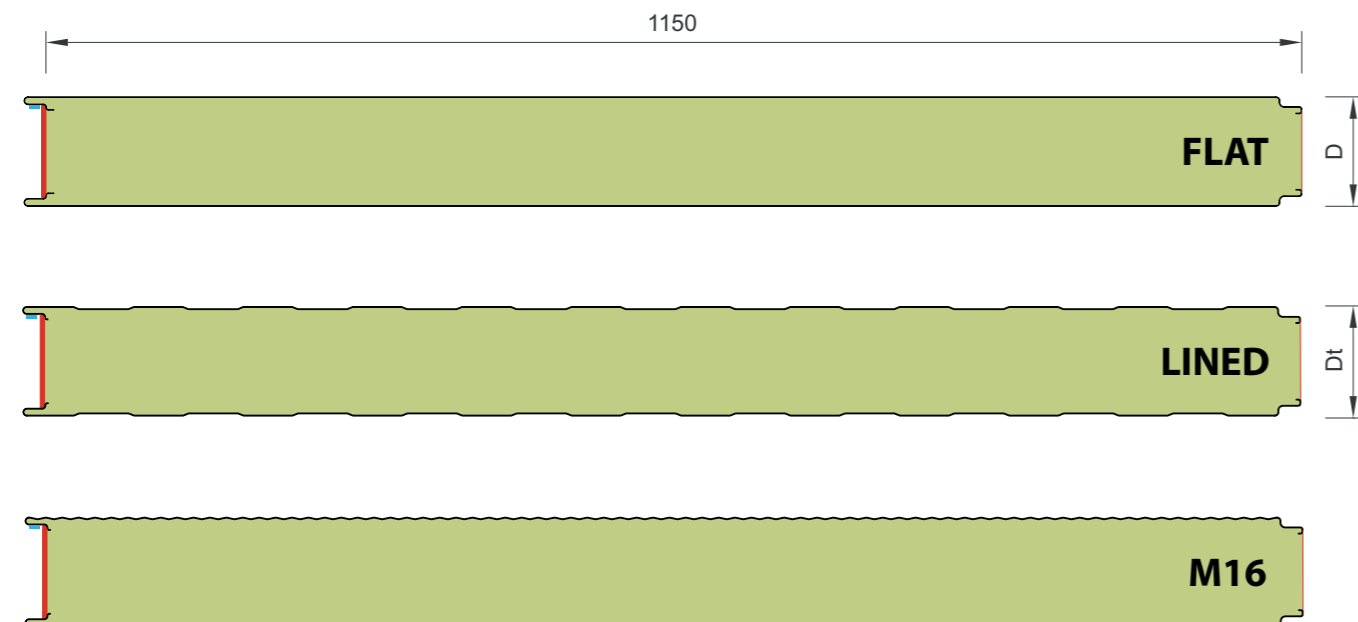
**APPLICATIONS**



The REX SDW WALL VF 1150 sandwich panel has steel inner and outer plates and is available in three different profiles (FLAT, LINED and M16 microrib). This product comes standard with a PIR (Polyisocyanurate) rigid foam core material and is for both horizontal and vertical mounting and is visibly fixed.



**Section**



**Properties**

Thickness [D] [mm]	Overall Thickness [Dt] [mm]	Weight [kg/m <sup>2</sup> ]	U-value [W/m <sup>2</sup> .k]
40	44	10,8	0,55
60	64	11,6	0,37
80	84	12,4	0,28
100	104	13,2	0,22
120	124	14,0	0,19
150	154	15,2	0,15
170	174	16,0	0,13
200	204	17,2	0,11
220	224	18,0	0,10

The mentioned insulation values in this table are based on calculations according NEN-EN14509:2013

**Fire**

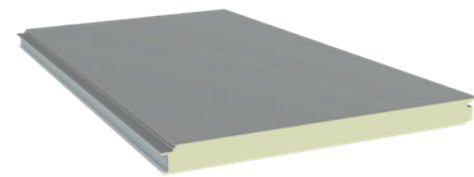
Property	Standard	Certification Standard	Result	Field of application
<b>Reaction to Fire</b>	EN ISO 11925-2:2010 ignitability	EN 13501-1:2007 Fire classification of construction products and building elements - Part 1	B-S2-D0	All thicknesses
	EN 13501-1:2017 reaction to fire			
<b>Fire resistance</b>	EN1365-2: determining the fire resistance of roof constructions	EN 13501-2:2007 Fire classification of construction products and building elements - Part 2	EI30, EW60	≥ 100 mm thickness
	EN1365-2: determining the fire resistance of roof constructions			
<b>Fire resistance</b>	EN1365-2: determining the fire resistance of roof constructions	EN 13501-2:2007 Fire classification of construction products and building elements - Part 2	EI60, EW60	≥ 200 mm thickness

**Certification**



# SANDWICH WALL PANELS PIR

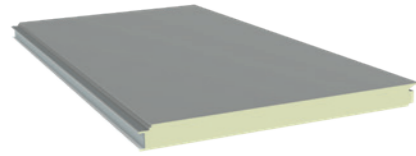
## REX SDW **WALL HF 1000**



- Available in various optical profiles
- Secret fixed installation
- Horizontal or vertical installation
- Cover width 1000 mm
- **Up to 30 minutes fire insulation and integrity (EI30)**
- Fire class B-S2-D0 (standard)
- Thicknesses from 60 mm to 150 mm
- Insulation value down to  $U = 0,15 \text{ W/m}^2\cdot\text{k}$



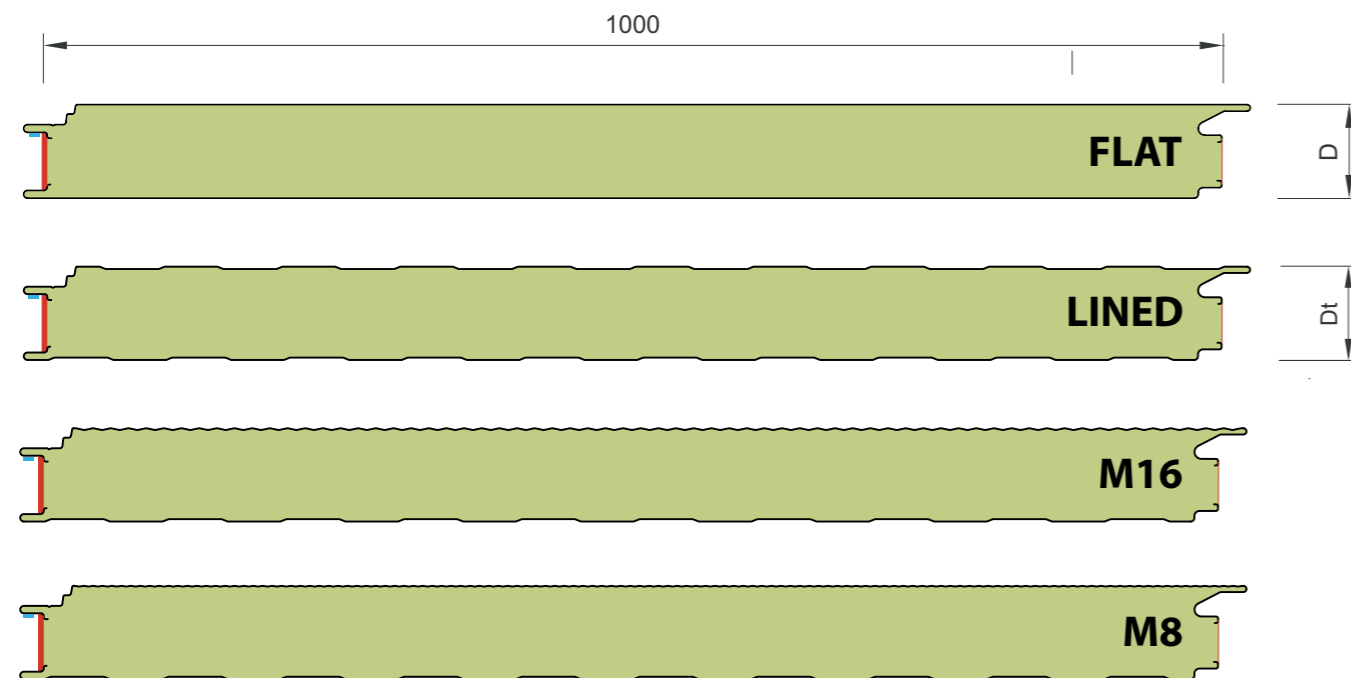
**APPLICATIONS**



The REX SDW WALL HF 1000 sandwich panel has steel inner and outer plates and is available in three different profiles (FLAT, LINED and M16 microrib). This product comes standard with a PIR (polyisocyanurate) rigid foam core material and is suitable for both horizontal and vertical mounting. Due to the special joint design, the screws are not visible after mounting (hidden fixing).



**Section**



To install secret fixed wall panels we recommend the usage of stainless steel spreader plates.

**Properties**

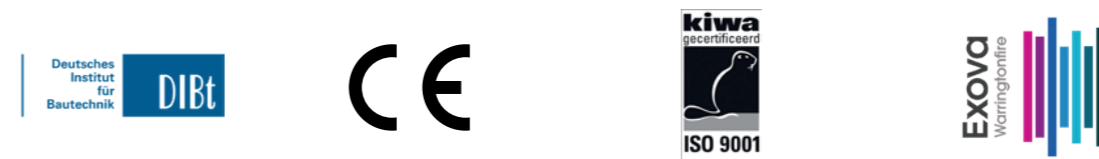
Thickness [D]	Overall Thickness [Dt]	Weight	U-value
[mm]	[mm]	[kg/m <sup>2</sup> ]	[W/m <sup>2</sup> .k]
60	64	12,1	0,40
80	84	12,9	0,28
100	104	13,7	0,23
120	124	14,5	0,19
150	154	15,7	0,15

The mentioned insulation values in this table are based on calculations according NEN-EN14509:2013

**Fire**

Property	Standard	Certification Standard	Result	Field of application
<b>Reaction to Fire</b>	EN ISO 11925-2:2010 ignitability	EN 13501-1:2007 Fire classification of construction products and building elements - Part 1	B-S2-D0	All thicknesses
	EN 13501-1:2017 reaction to fire			
<b>Fire resistance</b>	EN1365-2: determining the fire resistance of roof constructions	EN 13501-2:2007 Fire classification of construction products and building elements - Part 2	EI30, EW120	≥ 100 mm thickness

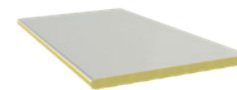
**Certification**



# SANDWICH WALL PANELS MW

The wall panels with a mineral wool (MW) core material combine high fire resistance with an aesthetically appealing appearance. Available with a visible installation (ZB) for use in partition walls and a secret-fixed installation (SF) for more aesthetical façade solutions.

## PRODUCT RANGE



REX SDW WALL VF 1000 MW

P. 42

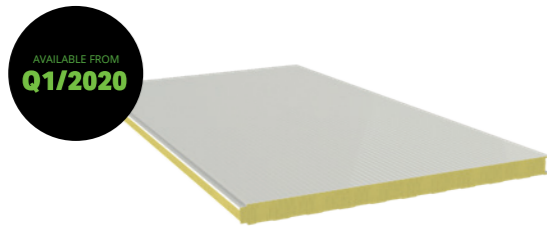


REX SDW WALL HF 1000 MW

P. 46

## SANDWICH WALL PANELS MW

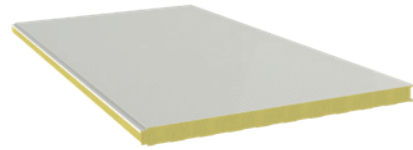
### REX SDW **WALL VF 1000 MW**



- Available in various optical profiles
- Specially for fire-resistant (partition) walls
- Mineral Wool core material
- **Up to 120 minutes fire insulation and integrity (EI120)**
- Horizontal or vertical installation
- Through fixed installation (visible fasteners)
- Cover width 1000 mm
- Standard fire class A2 -S1 -D0
- Thicknesses from 50 mm to 200 mm
- Insulation value down to  $U = 0,22 \text{ W/m}^2 \cdot \text{k}$



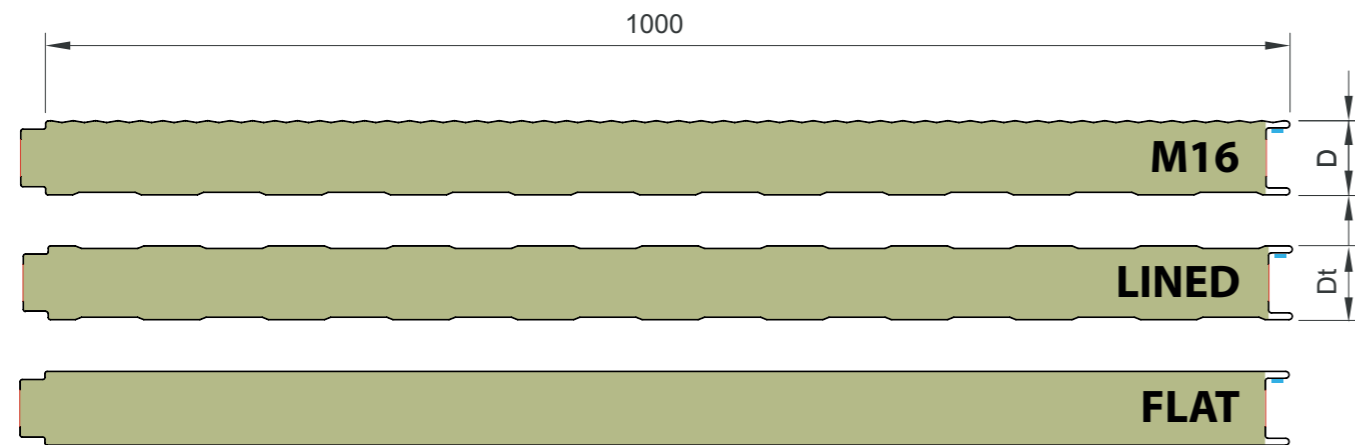
**APPLICATIONS**



The REX SDW WALL VF 1000 MW sandwich panel is most suitable for fire-resistant partition walls. This product comes standard with a mineral fibre core material and can be installed both horizontally and vertically. Also applicable as a facade or ceiling solution.



**Section**



**Properties**

Thickness [D]	Overall Thickness [Dt]	Weight	U-value
[mm]	[mm]	[kg/m <sup>2</sup> ]	[W/m <sup>2</sup> .k]
50	54	15,5	0,87
60	64	16,5	0,72
80	84	18,5	0,54
100	104	20,5	0,43
120	124	22,5	0,36
150	154	25,5	0,29
180	184	28,5	0,24
200	204	30,5	0,22

The mentioned insulation values in this table are based on calculations according NEN-EN14509:2013

**Fire**

Property	Standard	Certification Standard	Result*	Field of application
<b>Reaction to Fire</b>	EN ISO 11925-2:2010 ignitability	EN 13501-1:2007 Fire classification of construction products and building elements - Part 1	A2-S1-D0	All thicknesses
	EN 13501-1:2017 reaction to fire			
<b>Fire resistance</b>	EN1365-2: determining the fire resistance of roof constructions	EN 13501-2:2007 Fire classification of construction products and building elements - Part 2	EI30	≥ 60 mm thickness
			EI60	≥ 80 mm thickness
			EI90	≥ 100 mm thickness
			EI120	≥ 120 mm thickness

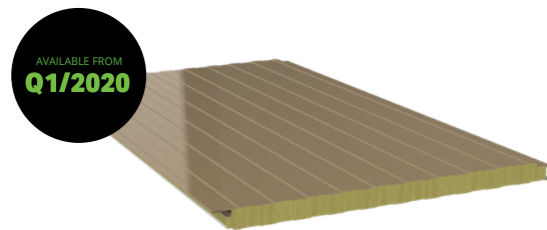
\*European fire tests project running, certification on request

**Certification**



## SANDWICH WALL PANELS MW

### REX SDW **WALL HF 1000 MW**

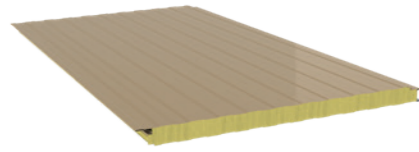


- Available in various optical profiles
- Specially for fire-resistant facades
- Mineral wool core material
- Secret fixed installation
- Horizontal or vertical installation
- Cover width 1000 mm
- Up to 120 minutes fire insulation and integrity (EI120)
- Standard fire class A2-S1-D0
- Thicknesses from 50 mm to 200 mm
- Insulation value down to  $U = 0,22 \text{ W/m}^2 \cdot \text{k}$





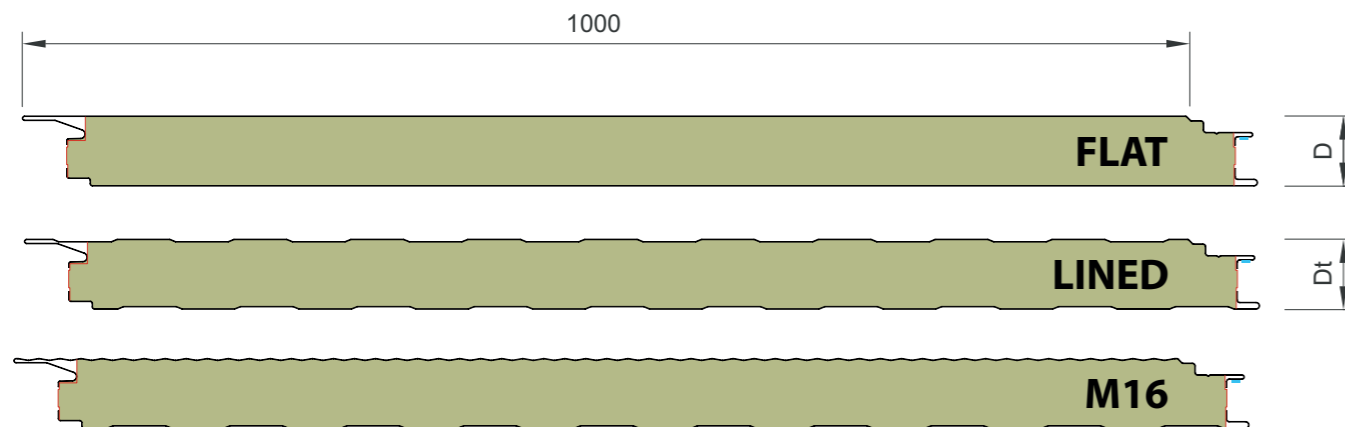
**APPLICATIONS**



The REX SDW WALL HF 1000 MW sandwich panel is the most suitable products for facades where a high fire safety requirements apply without compromising on aesthetics. With its secret fixation and mineral wool core material, the best of two worlds is combined.



**Section**



To install secret fixed wall panels we recommend the usage of stainless steel spreader plates.

**Properties**

Thickness [D] [mm]	Overall Thickness [Dt] [mm]	Weight [kg/m <sup>2</sup> ]	U-value [W/m <sup>2</sup> .k]
50	54	15,6	0,96
60	64	16,6	0,78
80	84	18,6	0,55
100	104	20,6	0,44
120	124	22,6	0,36
150	154	25,6	0,29
180	184	28,6	0,24
200	204	30,6	0,22

The mentioned insulation values in this table are based on calculations according NEN-EN14509:2013

**Fire**

Property	Standard	Certification Standard	Result	Field of application
<b>Reaction to Fire</b>	EN ISO 11925-2:2010 ignitability	EN 13501-1:2007 Fire classification of construction products and building elements - Part 1	A2-S1-D0	All thicknesses
	EN 13501-1:2017 reaction to fire			
<b>Fire resistance</b>	EN1365-2: determining the fire resistance of roof constructions	EN 13501-2:2007 Fire classification of construction products and building elements - Part 2	EI30	≥ 60 mm thickness
			EI60	≥ 80 mm thickness
			EI90	≥ 100 mm thickness
			EI120	≥ 120 mm thickness

**Certification**



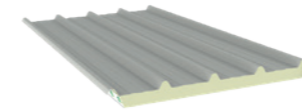


# AGRI PANELS

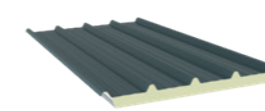
In an agricultural application, in certain situations, circumstances may occur which will accelerate the corrosion of the metal internal or external face of a sandwich panel. REX Panels & Profiles has developed the "AGRI" range Most suitable for these situations. The plastic outside and / or inside of these products are insensitive to corrosion, which enables us to guarantee a durable solution for many years.



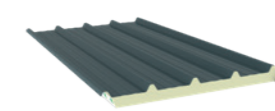
## PRODUCT RANGE



REX SDW ROOF 4 CLEAN  
P. 52



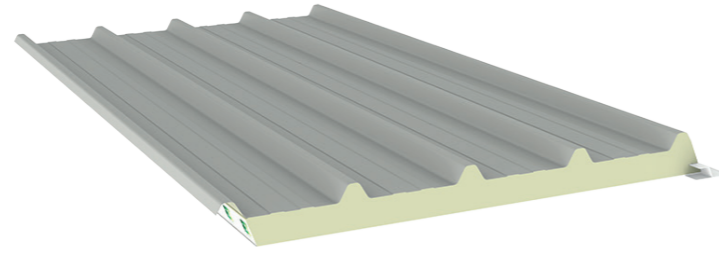
REX SDW ROOF 4 AGRI ECO  
P. 54



REX SDW DAK 4 ROOF CLEAN  
P. 55

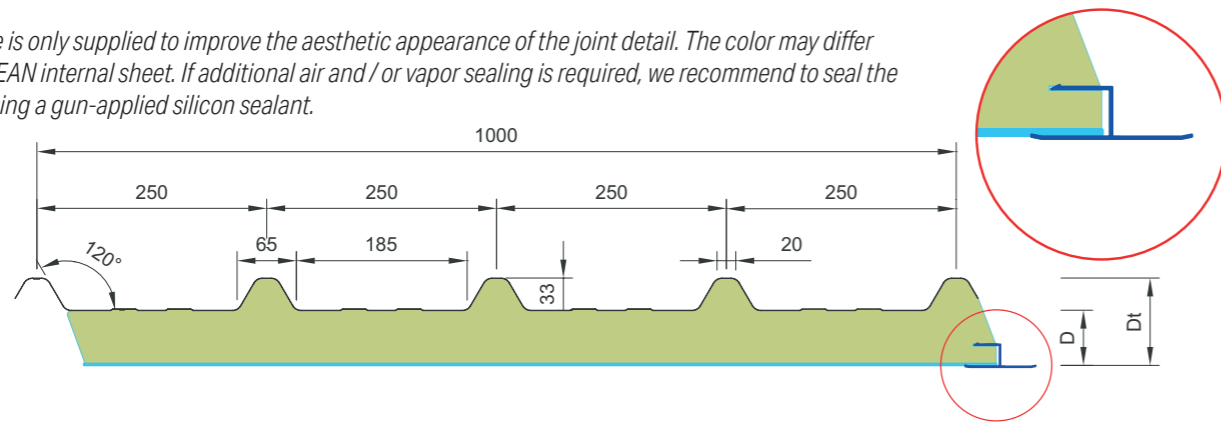
## APPLICATIONS

The REX SDW ROOF 4 CLEAN sandwich panel has a trapezoidal steel outer plate and a polyester inner plate. With the supplied T-profiles the joints on the inside are neatly finished with a nice flat inside that is insensitive to corrosion as a result. This product is supplied as standard with a PIR (Polyisocyanurate) rigid foam core material and is suitable for roofs with a roof pitch from 4° or more.



## Section

The T-profile is only supplied to improve the aesthetic appearance of the joint detail. The color may differ from the CLEAN internal sheet. If additional air and / or vapor sealing is required, we recommend to seal the T-profiles using a gun-applied silicon sealant.



## Properties

Thickness [D] [mm]	Overall Thickness [Dt] [mm]	Weight [kg/m <sup>2</sup> ]	U-value [W/m <sup>2</sup> .k]
20	53	7,7	0,82
30	63	8,1	0,61
40	73	8,5	0,48
50	83	8,9	0,40
60	93	9,3	0,34
70	103	9,7	0,30
80	113	10,1	0,26
90	123	10,5	0,24
100	133	10,9	0,22
110	143	11,3	0,20
120	153	11,7	0,18
130	163	12,1	0,17
160	193	13,3	0,14

The mentioned insulation values in this table are based on calculations according NEN-EN14509:2013

## Fire

For further information on fire issues please contact the sales department of REX Panels & Profiles

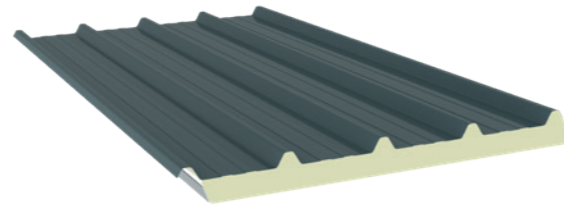
## Certification



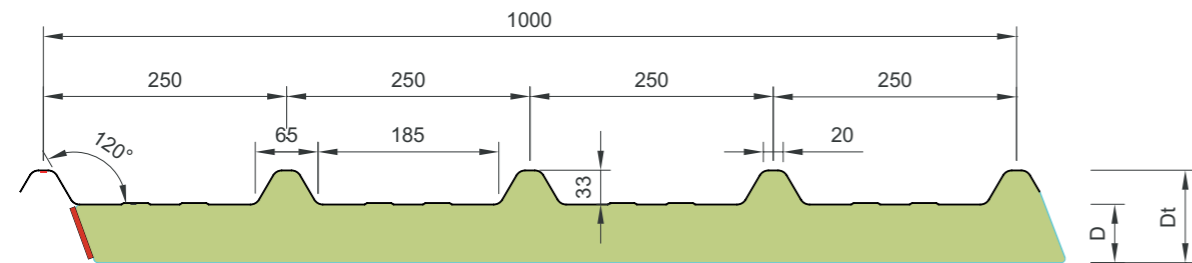
**APPLICATIONS**

The REX SDW ROOF 4 AGRI ECO sandwich panel has a trapezoidal solid plastic outer plate and an aluminum-foil finish at the inside. This product is therefore very suitable for buildings with an aggressive indoor climate (for example, a high concentration of ammonia vapors). This product is supplied as standard with a PIR (Polyisocyanurate) rigid foam core material and is suitable for roofs with a roof pitch from 4° or more.

**NOTE:** The aluminum stucco interior is an exclusively functional finish. We recommend the REX SDW ROOF 4 version when an aesthetically more attractive solution is required.



**Section**



**Properties**

Thickness [D]	Overall Thickness [Dt]	Weight	U-value
[mm]	[mm]	[kg/m <sup>2</sup> ]	[W/m <sup>2</sup> .k]
20	53	3,55	0,82
30	63	3,95	0,61
40	73	4,35	0,48
60	93	5,15	0,34
100	133	6,75	0,22

The mentioned insulation values in this table are based on calculations according NEN-EN14509:2013

**Fire**

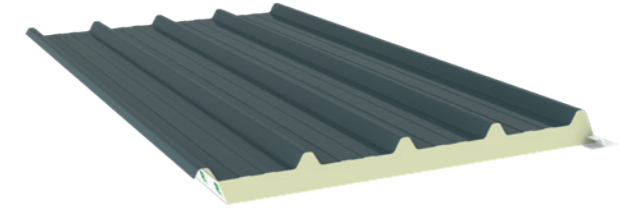
For further information on fire issues please contact the sales department of REX Panels & Profiles

**Certification**



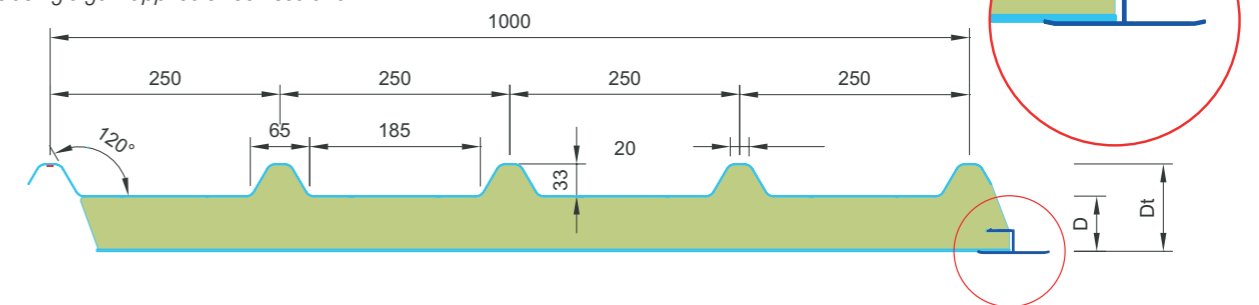
**APPLICATIONS**

The REX SDW ROOF 4 AGRI CLEAN sandwich panel has a trapezoidal solid plastic outer plate and a polyester inner plate. Due to the plastic outer and inner plate, this product is insensitive to corrosion. This product is supplied as standard with a PIR (Polyisocyanurate) rigid foam core material and is suitable for roofs with a roof pitch from 4° or more.



**Section**

The T-profile is only supplied to improve the aesthetic appearance of the joint detail. The color may differ from the CLEAN internal sheet. If additional air and / or vapor sealing is required, we recommend to seal the T-profiles using a gun-applied silicon sealant.



**Properties**

Thickness [D]	Overall Thickness [Dt]	Weight	U-value
[mm]	[mm]	[kg/m <sup>2</sup> ]	[W/m <sup>2</sup> .k]
20	53	4,7	0,82
30	63	5,1	0,61
40	73	5,5	0,48
50	83	5,9	0,40
60	93	6,3	0,34
70	103	6,7	0,30
80	113	7,1	0,26
90	123	7,5	0,24
100	133	7,9	0,22
110	143	8,3	0,20
120	153	8,7	0,18
130	163	9,1	0,17
160	193	10,3	0,14

The mentioned insulation values in this table are based on calculations according NEN-EN14509:2013

**Fire**

For further information on fire issues please contact the sales department of REX Panels & Profiles

**Certification**



# TILE SHEETS

With the REXTILE profiled sheets from REX Panels & Profiles you have found a quick and affordable alternative to a traditional tiled roof. With the special matt coating, a roof with REXTILES will have nearly the same appearance as a traditional tiled roof.



## PRODUCT RANGE



REX TILE 1100

**P. 58**

# REXTILE SHEETS

## REX SDW **REX TILE 1100**



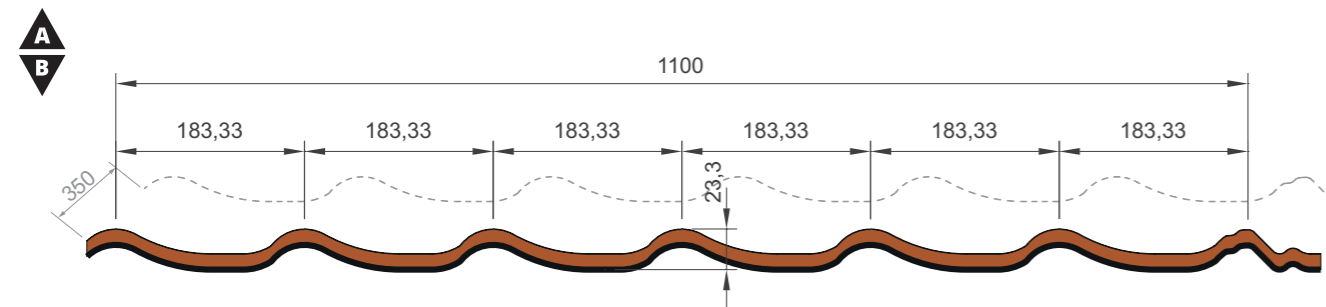
- Profiled sheet with rooftile appearance
- For pitched roofs starting from 8°
- Cover width 1100 mm
- Fire class B-S2-D0
- Available with anti-condensation foil (inside)
- Available with special matt coating for a real rooftile appearance

**APPLICATIONS**

The REX TILE 24.183.1100 is a roof tile-shaped sheet suitable for use on pitched roofs with a slope from 8°. The cover width of this product is 1100 mm.



**Section**



**Properties**

Thickness [D]	Weight
[mm]	[kg/m <sup>2</sup> ]
0,50	4,8

**Fire**

Property	Standard	Certification Standard	Result	Field of application
<b>Reaction to Fire</b>	EN ISO 11925-2:2010 ignitability EN 13501-1:2017 reaction to fire	EN 13501-1:2007 Fire classification of construction products and building elements - Part 1	B / C-S2-D0*	All thicknesses
<b>External Fire Performance</b>	CEN/TS 1187	EN14782:2006 & 2006/600/EC	B <sub>ROOF</sub> (t <sub>1</sub> , t <sub>2</sub> and t <sub>3</sub> )	All thicknesses

\*Depends on coating choice

**Certification**



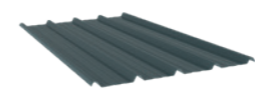


# PROFILED SHEETS

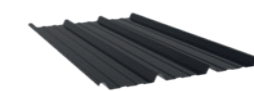
Our profiled sheets can be applied in pitched roofs and walls. A fast and affordable solution in case of uninsulated roof and wall applications or as the external sheet in case of an built-up system with insulation.



## PRODUCT RANGE



REX 33.250.1000  
P. 64



REX 45.333.1000  
P. 68

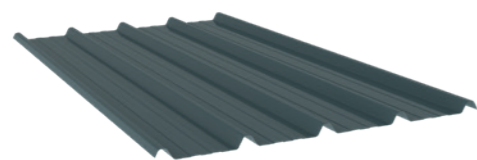


REX 35.207.1035  
P. 72



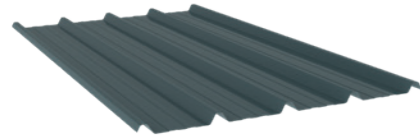
# PROFILED PLATES

## REX 33.250.1000



- Trapezoidal profiled sheet
- Available with anti-condensation foil (inside)
- For use in **pitched roofs**
- Can be seamlessly combined with ROOF 4 products
- Fire class B-S2-D0 (standard)

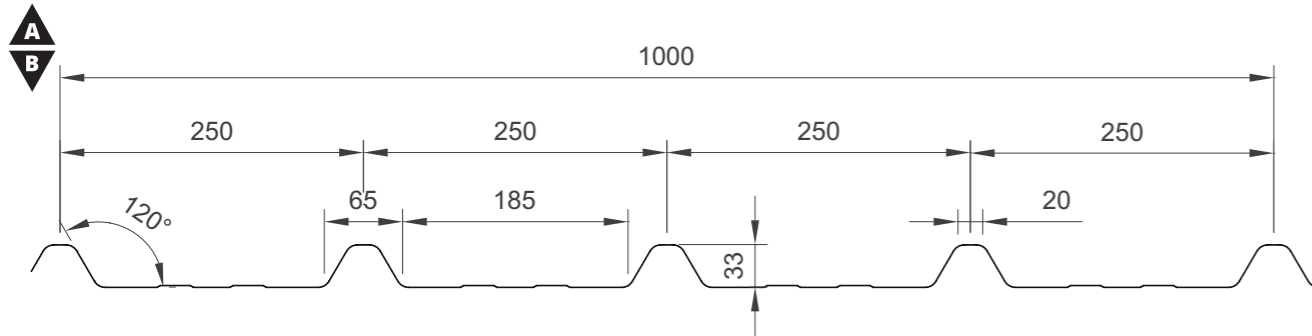
**APPLICATIONS**



The 33.250.1000 profiled sheet is a trapezoidal sheet suitable for use on pitched roofs. The profiling of this product is identical to the outer sheet of the ROOF 4 panels range and therefore fits in seamlessly with this product.



**Section**



**Properties**

Thickness [D]	Weight
[mm]	[kg/m <sup>2</sup> ]
0,50	4,8
0,63	6,0
0,75	7,2

**Fire**

Property	Standard	Certification Standard	Result	Field of application
<b>Reaction to Fire</b>	EN ISO 11925-2:2010 ignitability	EN 13501-1:2007 Fire classification of construction products and building elements - Part 1	B-S2-D0*	All thicknesses
	EN 13501-1:2017 reaction to fire			
<b>External Fire Performance</b>	CEN/TS 1187	EN14782:2006 & 2006/600/EC	B <sub>ROOF</sub> (t <sub>1</sub> , t <sub>2</sub> and t <sub>3</sub> )	All thicknesses

\*Depends on coating choice

**Certification**

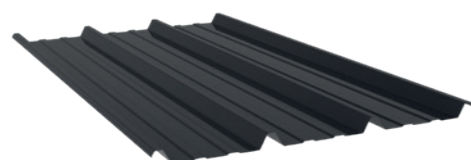


PROFILED SHEETS

PROFILED SHEETS

# PROFILED SHEETS

## REX 45.333.1000



- Trapezoidal profiled sheet
- For use in **pitched roofs**
- Available with anti-condensation foil (inside)
- Can be seamlessly combined with ROOF 3 products
- Fire class B-S2-D0 (standard)



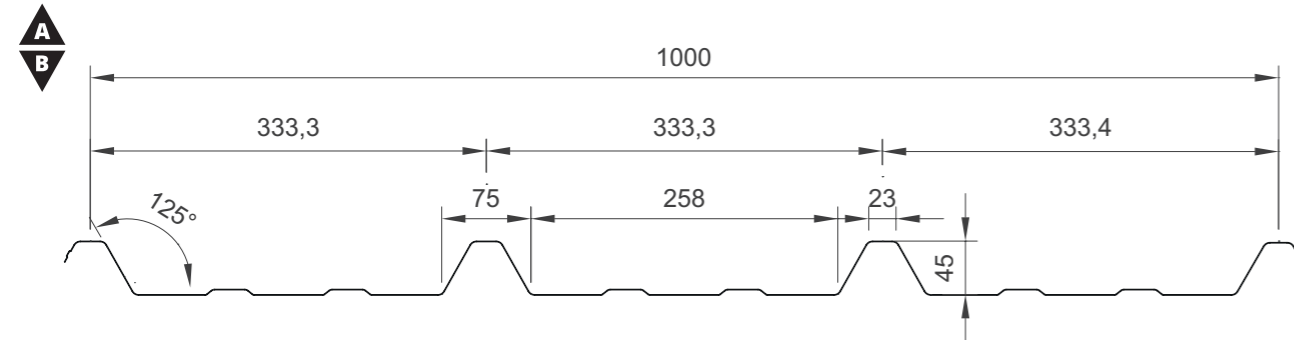
**APPLICATIONS**



The REX 45.333.1000 profiled sheet is a trapezoidal sheet suitable for use on pitched roofs. The profiling of this product is identical to the outer sheet of the ROOF 4 panels range and therefore fits in seamlessly with this product.



**Section**



**Properties**

Thickness [D]	Weight
[mm]	[kg/m <sup>2</sup> ]
0,50	4,8
0,70	6,7
0,75	7,2

**Fire**

Property	Standard	Certification Standard	Result	Field of application
<b>Reaction to Fire</b>	EN ISO 11925-2:2010 ignitability	EN 13501-1:2007 Fire classification of construction products and building elements - Part 1	B / C-S2-D0*	All thicknesses
	EN 13501-1:2017 reaction to fire			
<b>External Fire Performance</b>	CEN/TS 1187	EN14782:2006 & 2006/600/EC	B <sub>ROOF</sub> (t <sub>1</sub> , t <sub>2</sub> and t <sub>3</sub> )	All thicknesses

\*Depends on coating choice

**Certification**



# PROFILED SHEETS

## REX 35.207.1035

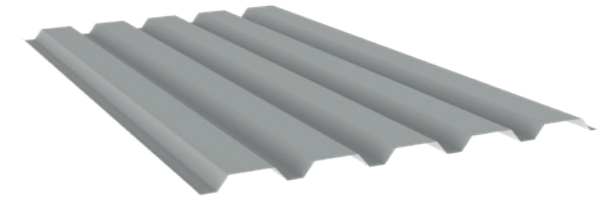


- Trapezoidal profiled sheet
- **For use in facades (horizontal or vertical)**
- Available with anti-condensation foil (inside)
- Fire class B-S2-D0 (standard)

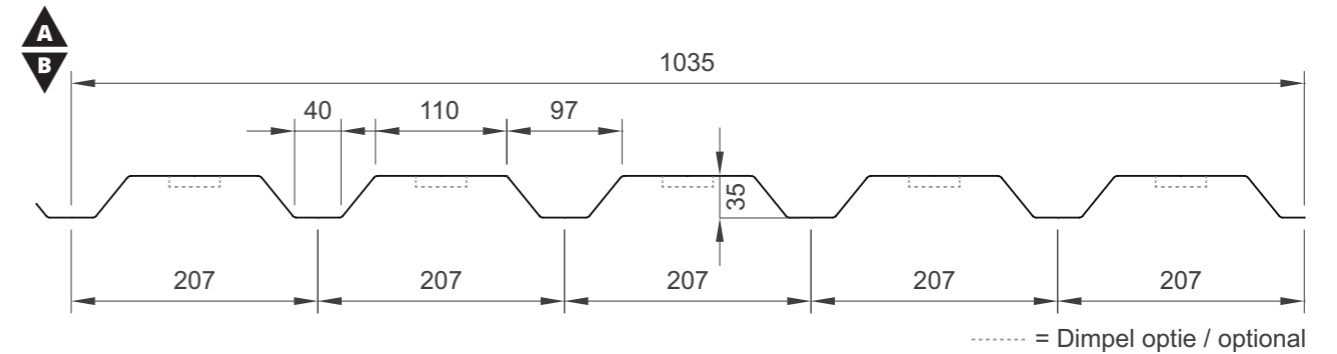
REX 35.207.1035

### APPLICATIONS

The 35.207.1035-1 profiled sheet is a trapezoidal sheet suitable for use on walls.



### Section



### Properties

Thickness [D]	Weight
[mm]	[kg/m <sup>2</sup> ]
0,50	4,8
0,63	6,0
0,75	7,2

### Fire

Property	Standard	Certification Standard	Result	Field of application
<b>Reaction to Fire</b>	EN ISO 11925-2:2010 ignitability	EN 13501-1:2007 Fire classification of construction products and building elements - Part 1	B / C-S2-D0*	All thicknesses
	EN 13501-1:2017 reaction to fire			

\*Depends on coating choice

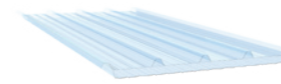
### Certification



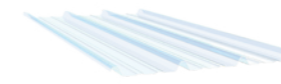
# DAYLIGHT SOLUTIONS

The daylight solutions from REX Panels & Profiles have been specially developed to be used in combination with our sandwich panels and profiled sheets. The design fits seamlessly with the corresponding products. The VISION products are made up of several layers, creating an insulated solution that minimizes condensation and heat losses.

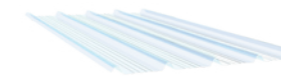
## PRODUCT RANGE



REX VISION 4  
P. 76



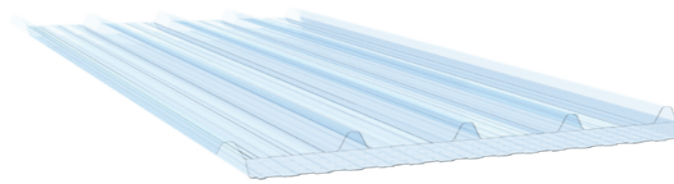
REX VISION LIGHT 3  
P. 77



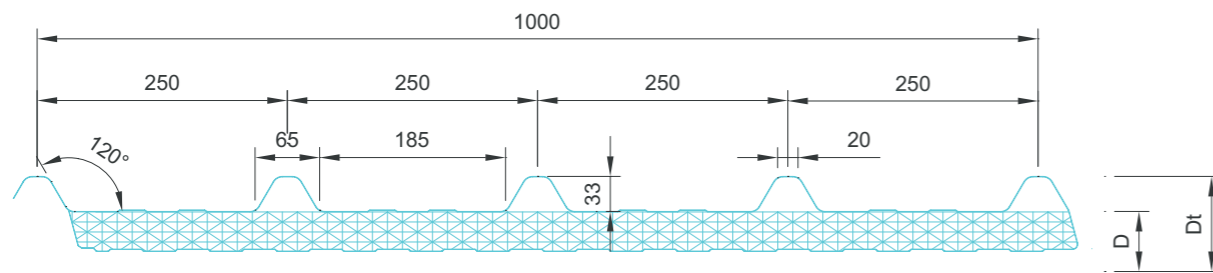
REX VISION LIGHT 4  
P. 78

**APPLICATIONS**

The REX VISION 4 insulated rooflight fits perfectly with the sandwich panels from the ROOF 4 range. Due to the multiple layer structure in the core, a relatively high insulation value is created.



**Section**



**Properties**

Thickness [D]	Total thickness	Weight	U-value	Rd-value	Light Transmittance
[mm]	[Dt]	[kg/m <sup>2</sup> ]	[W/m <sup>2</sup> .K]	[m <sup>2</sup> .k/W]	[%]
20	53	2,4	1,56	0,64	65
30	63	2,5	1,28	0,78	55
40	73	2,7	1,00	1,00	40

**Fire**

Property	Standard	Certification Standard	Result	Field of application
Reaction to Fire	EN ISO 11925-2:2010 ignitability	EN 13501-1:2007 Fire classification of construction products and building elements - Part 1	B-S2-D0	All thicknesses
	EN 13501-1:2017 reaction to fire			

**Certifications**

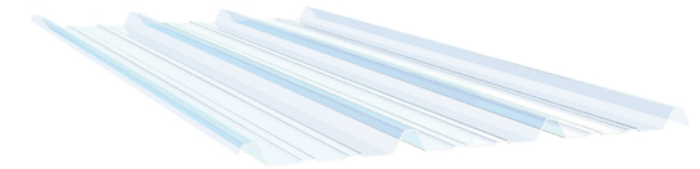


**Allowable span**

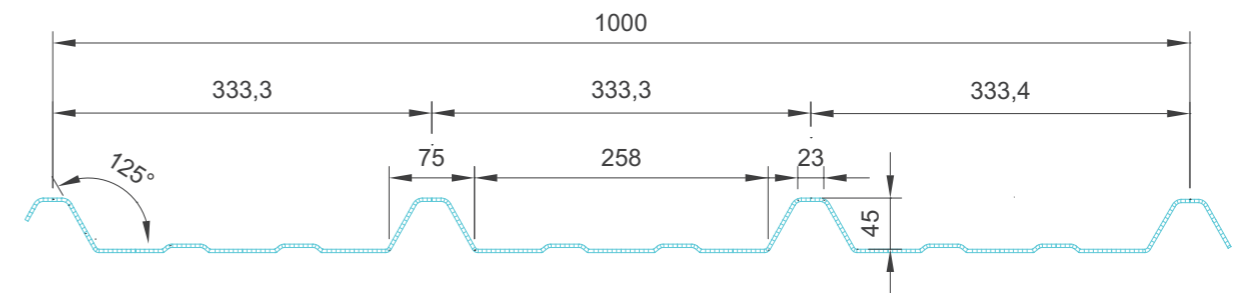
Thickness [D]	Span 1500 mm	Span 2000 mm	Span 2500 mm
[mm]	[kN/m <sup>2</sup> ]	[kN/m <sup>2</sup> ]	[kN/m <sup>2</sup> ]
25	1,40	1,00	0,50
30	1,80	1,20	0,70
40	2,30	1,50	1,00

**APPLICATIONS**

The VISION LIGHT 3 polycarbonate rooflight fits perfectly with the sandwich panels from the ROOF 3 range. The double-walled structure creates a very strong and insulating product. The outside is standard equipped with a UV protective layer.



**Section**



**Properties**

Thickness [D]	Total thickness	Weight	U-value	Rd-value	Light Transmittance
[mm]	[Dt]	[kg/m <sup>2</sup> ]	[W/m <sup>2</sup> .K]	[m <sup>2</sup> .k/W]	[%]
3	48	1,5	4,70	0,21	76

**Fire**

Property	Standard	Certification Standard	Result	Field of application
Reaction to Fire	EN ISO 11925-2:2010 ignitability	EN 13501-1:2007 Fire classification of construction products and building elements - Part 1	B-S2-D0	All thicknesses
	EN 13501-1:2017 reaction to fire			

**Certifications**



**Allowable span**

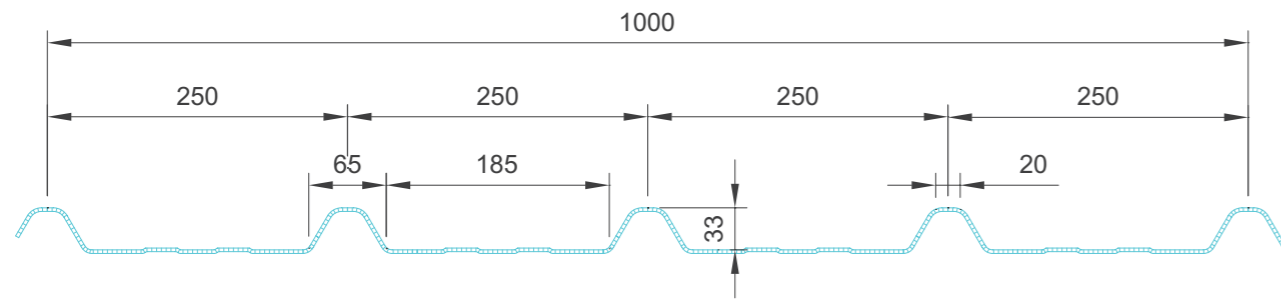
Thickness [D]	Span 1250 mm	Span 1300 mm	Span 1400 mm
[mm]	[kN/m <sup>2</sup> ]	[kN/m <sup>2</sup> ]	[kN/m <sup>2</sup> ]
3	1,50	1,20	0,90

**APPLICATIONS**

The VISION LIGHT 4 polycarbonate rooflight fits perfectly with the sandwich panels from the ROOF 4 range. The double-walled structure creates a very strong and insulating product. The outside is standard equipped with a UV protective layer.



**Section**



**Properties**

Thickness [D]	Total thickness	Weight	U-value	Rd-value	Light Transmittance
[mm]	[Dt]	[kg/m <sup>2</sup> ]	[W/m <sup>2</sup> .K]	[m <sup>2</sup> .k/W]	[%]
3	36	1,5	4,70	0,21	76

**Fire**

Property	Standard	Certification Standard	Result	Field of application
Reaction to Fire	EN ISO 11925-2:2010 ignitability	EN 13501-1:2007 Fire classification of construction products and building elements - Part 1	B-S2-D0	All thicknesses
	EN 13501-1:2017 reaction to fire			

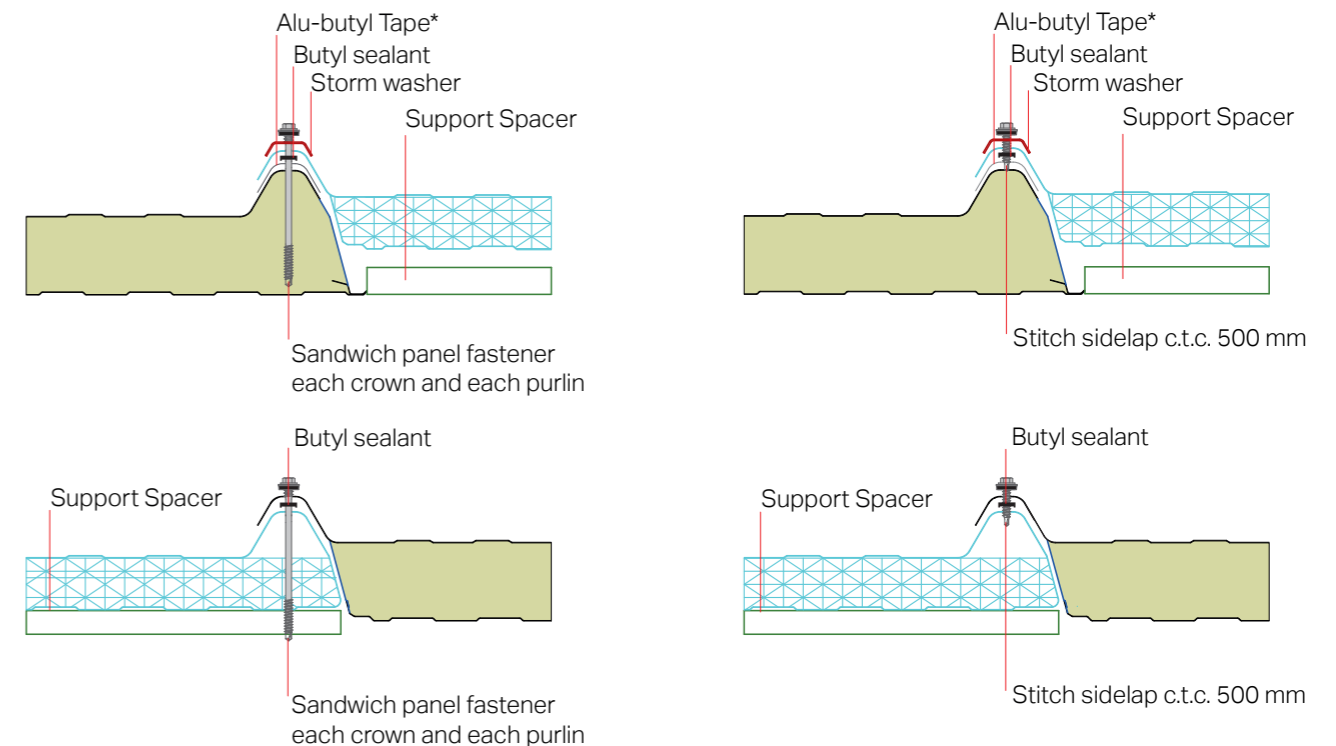
**Certifications**



**Allowable span**

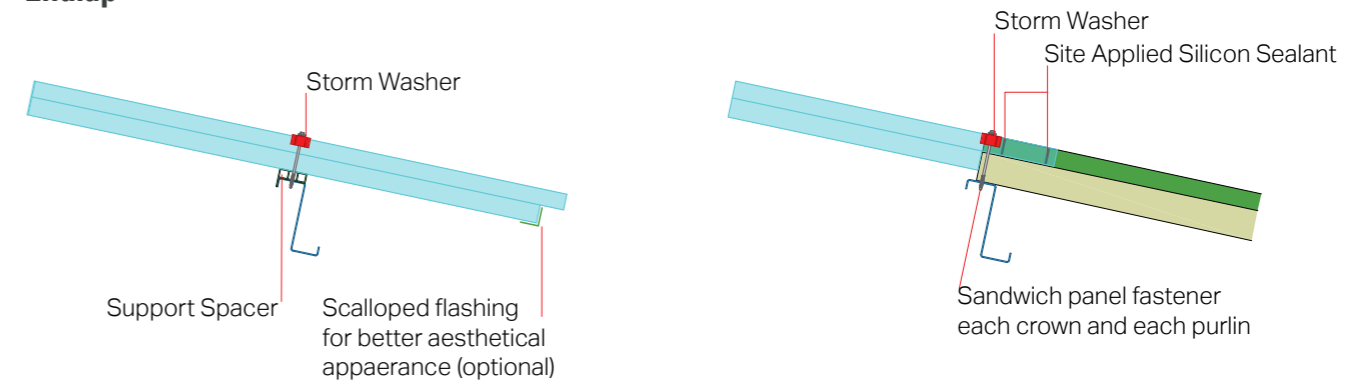
Thickness [D]	Span 1250 mm	Span 1300 mm	Span 1400 mm
[mm]	[kN/m <sup>2</sup> ]	[kN/m <sup>2</sup> ]	[kN/m <sup>2</sup> ]
3	1,50	1,20	0,90

**Sidelap**

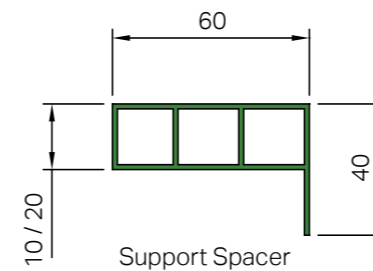


\* IN SITUATIONS WHERE THE POLYCARBONATE ROOFLIGHT COMES INTO DIRECT CONTACT WITH A PLASTISOL COATING, AN ALU-BUTYL TAPE MUST BE APPLIED INBETWEEN

**Endlap**



**Spacer**

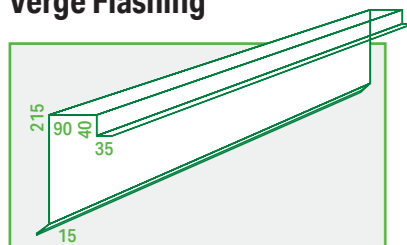


Spacer application			
Product	Thicknessl	Thickness Vision	Spacer
SDW ROOF 4	20 mm	25	no spacer
SDW ROOF 4	30 mm	30	no spacer
SDW ROOF 4	30 mm	25	10 mm
SDW ROOF 4	40 mm	25	20 mm
SDW ROOF 4	40 mm	30	10 mm
SDW ROOF 4	40 mm	40	no spacer
SDW ROOF 4	50 mm	30	20 mm
SDW ROOF 4	50 mm	40	10 mm
SDW ROOF 4	60 mm	40	20 mm



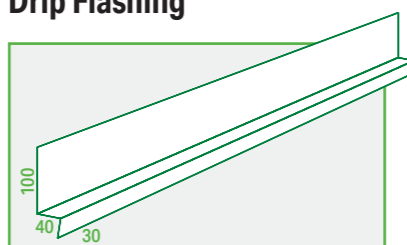
# FLASHINGS

**Verge Flashing**



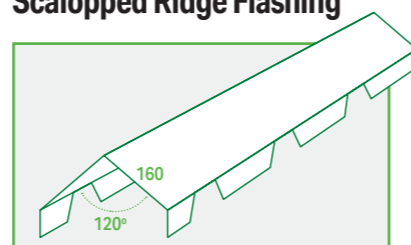
Standard **2100 mm**  
Max L **6000 mm**

**Drip Flashing**



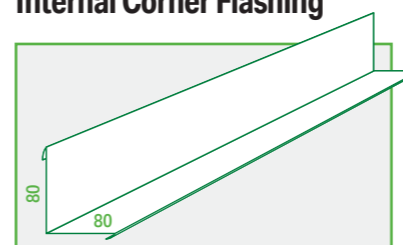
Standard **2100 mm**  
Max L **6000 mm**

**Scalloped Ridge Flashing**



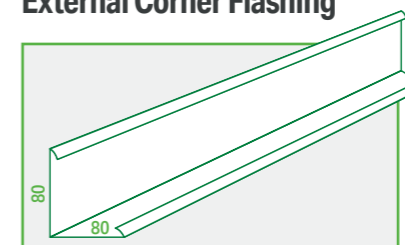
Standard **1140 mm**  
Profile **45.333.1000**  
Profile **33.250.1000**

**Internal Corner Flashing**



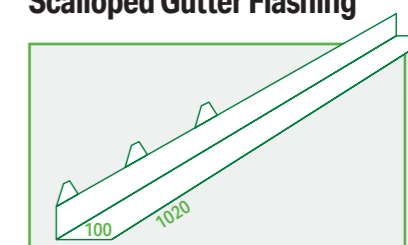
Standard **2100 mm**  
Max L **6000 mm**

**External Corner Flashing**



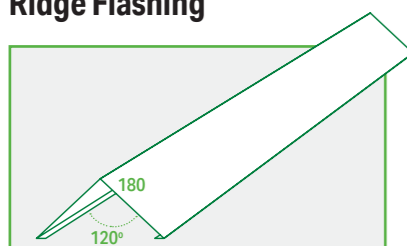
Standard **2100 mm**  
Max L **6000 mm**

**Scalloped Gutter Flashing**



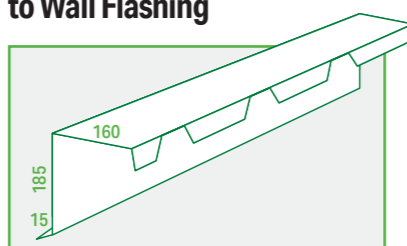
Standard **1020 mm**  
Profile **45.333.1000**  
Profile **33.250.1000**

**Ridge Flashing**



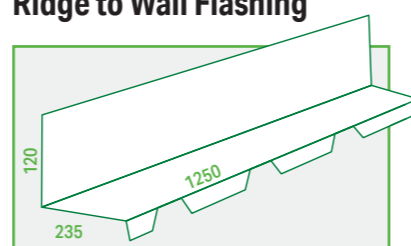
Standard **2100 mm**  
Max L **6000 mm**

**Scalloped Ridge to Wall Flashing**



Standard **1250 mm**  
Profile **45.333.1000**  
Profile **33.250.1000**

**Ridge to Wall Flashing**



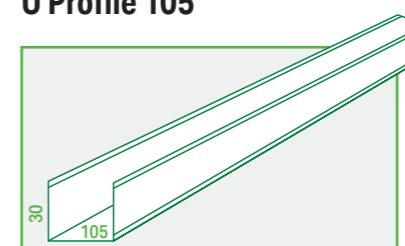
Standard **1250 mm**  
Profile **45.333.1000**  
Profile **33.250.1000**

**U Profile 65**



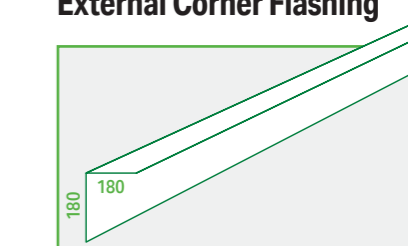
Standard **2100 mm**  
Max L **6000 mm**

**U Profile 105**



Standard **2100 mm**  
Max L **6000 mm**

**External Corner Flashing**



Standard **2100 mm**  
Max L **6000 mm**

For more information and our complete collection flashings please ask for our separate flashing brochure.

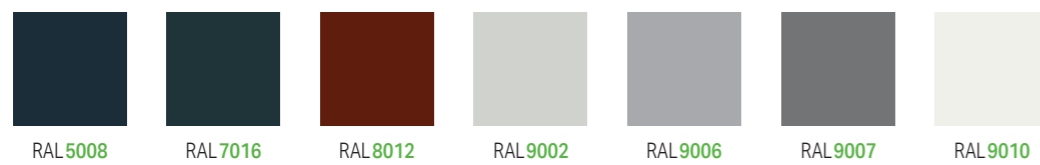
For more information and our complete collection flashings please ask for our separate flashing brochure.

# COLOR CHART

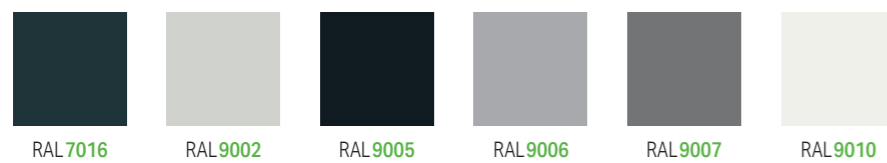
## Polyester 25 µ in 0,5/0,63 mm



## Polyester 25 µ in 0,75 mm



## REXPUR 60 µ in 0,5/0,63/0,75 mm



## Plastisol 200 µ in 0,5/0,63 mm



## Rooftilecolors in polyester 25µ / 0,5 mm



## Rooftilecolors in 40 µ mat / 0,5 mm



## Rooftilecolors in plastisol 200 µ / 0,5 mm





**LOCATION 1**

Z.I. Tournai Ouest  
Rue du mont des Carliers 4  
7522 Blandain  
VAT BE 0473.823.026

**LOCATION 2**

Z.I. Tournai Ouest  
Rue du Grand Carex 7  
7503 Froyennes  
VAT BE 0473.823.026

**CONTACT**

T: +32 69 44 66 80  
F: +32 69 44 66 81  
E: [info@rexpanels.com](mailto:info@rexpanels.com)